

PLACE J:
 - best view of downtown
 - transition into urbanized environment



PLACE I:
 - skyline view expands, river more visible
 - reinvention of the neighborhood
 - focus on 21st century industry, recycling



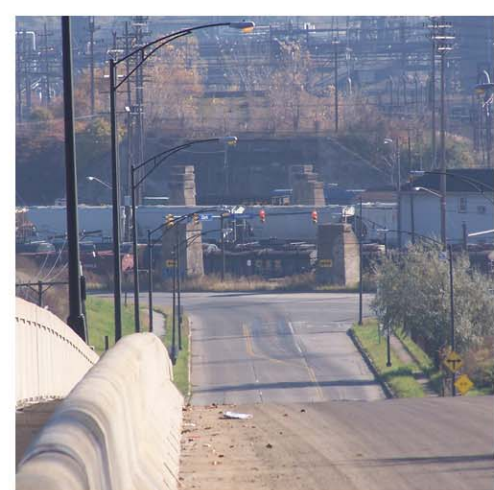
PLACE H:
 - focus on natural regeneration
 - regeneration rooted in context of what came before



PLACE G:
 - most comprehensive view of steel industry
 - glimpses of river, canal terminus, church steeples
 - experience noise and wind



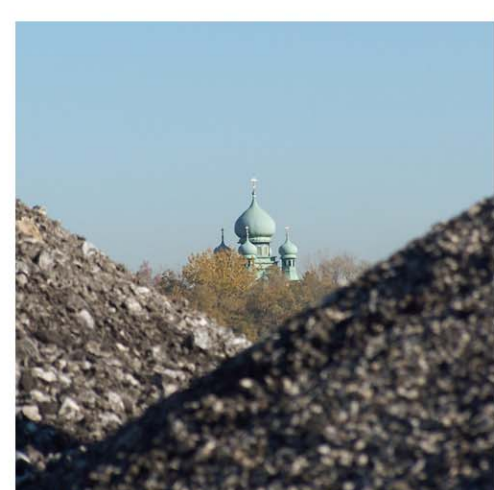
PLACE F:
 - relationship between highway and community
 - historical mix of community/industry/recreation
 - opportunity for urban meadow/prairie along I-490



PLACE E:
 - Clark Ave. Bridge: longest in U.S. at one time
 - travel corridor connecting neighborhood to industry
 - potential location for oral histories from locals



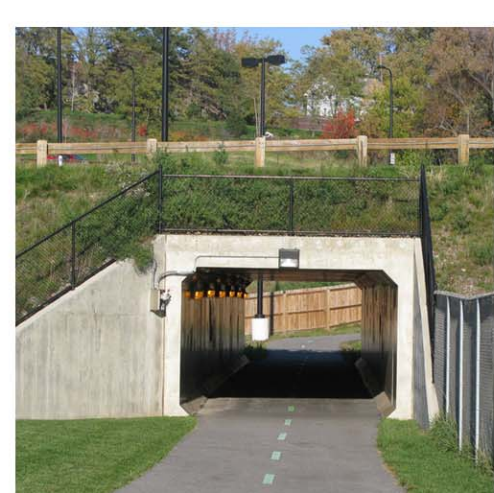
PLACE D:
 - under the bridge "room"
 - could support active recreation



PLACE C:
 - direct contact with geology/geography of hillside
 - greenway: role of neighborhood clean-ups
 - trash to treasure: materials handling/by-products/recycling



PLACE B:
 - walking route to work
 - intersection of neighborhoods and mills
 - stairway down to Flats



PLACE A:
 - tunnel "room" from Steelyard Commons

MEANING OF PLACE